

Holy Cross Ranger District
24747 US Hwy 24
P.O. Box 190
Minturn, CO 81645
(970) 827- 5715 - Voice
www.fs.usda.gov/whiteriver



United States Department of Agriculture



HIKING

NOTCH MOUNTAIN TRAIL #2000

Length: 5.1 miles (one way)

Difficulty: More Difficult

Beginning Elevation: 10,314 ft.

Elevation Gain: +2,890 ft.-127 ft. = +2,763 ft.

Trail Use: Moderate to High

Open To: Hiking, Horseback

Ending Elevation: 13,077 ft.

USGS Map(s): Minturn, Mt. of the Holy Cross

Permit Information: In order to continue to provide quality recreation experiences and to protect the wilderness lands, the Forest Service must gather data regarding visitor use and travel patterns. Each party staying overnight in the Holy Cross Wilderness is **required to self-register at the trailhead and to carry a copy of the registration with them** during their visit. There is no fee charged and no limit to the number of permits issued.

Access from Vail: Travel west from Vail on I-70 to Exit 171 for Minturn and Hwy 24. Turn right onto Hwy 24. Proceed south through Minturn about 5 miles to Tigiwon Road #707 (on right immediately before crossing bridge over Eagle River). Turn right onto Tigiwon Road and continue to the end, 8 miles on a dirt road. **Tigiwon road is closed annually from May 1 to June 21 and will open on June 21 if the road is snow-free by that date. **

Trail Highlights: The trail starts at the Fall Creek trailhead and continues up this trail for 2.5 miles passing through spruce and fir stands. The trail will come to a junction with the Notch Mountain trail. Take the right fork. The trail then climbs quickly and steadily past timberline to the Notch Mtn Shelter.

Comments: Take plenty of water, this trail can be hot and long.

The Notch Mountain Shelter was built in 1924 to accommodate the hundreds of people who hiked yearly pilgrimages to view Mt. of the Holy Cross. Overnight camping in the historic shelter is prohibited. Hikers may use it for shelter from sudden lightning storms as it has a lightning rod.

The trail provides access to the western ridge of Notch Mountain and offers a close-up view of the snowy cross on Mt. of the Holy Cross (the Cross usually loses most of its snow late July and is not as defined as other times of the year).

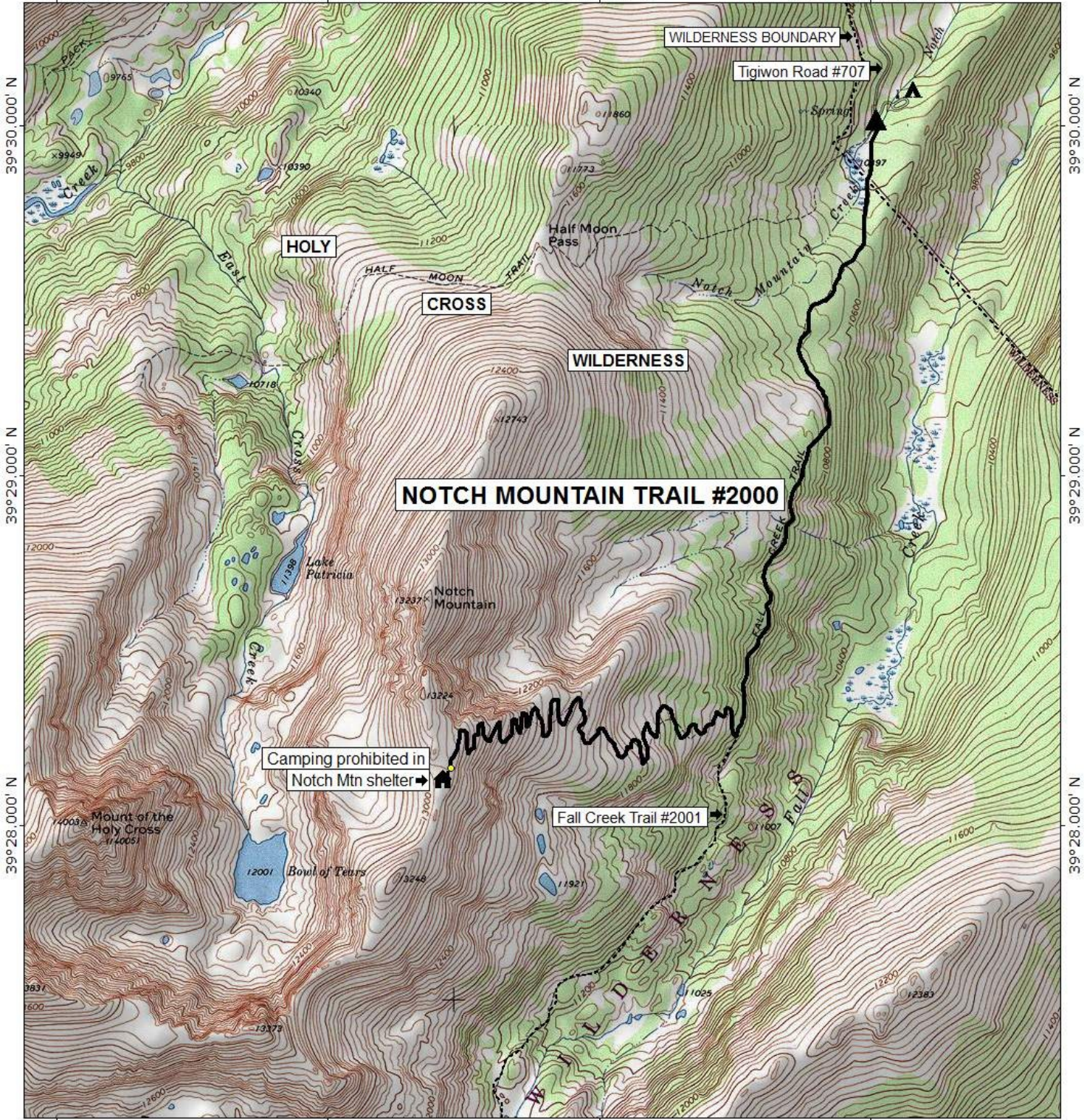
Important Information: Notch Mountain is within the **Holy Cross Wilderness**. Wilderness is for your use and enjoyment, but you have an obligation to leave it unimpaired for future generations. Please understand your responsibilities when visiting these special places, and leave no trace of your visit. A few of the Holy Cross Wilderness regulations include:

- * Camping - camp at least 100 feet from streams, lakes, and trails. Camping in the Notch Mountain Shelter is prohibited.
- * Dogs - must be under control and must not harass wildlife, people, or damage property.
- * Fire - campstoves are recommended and fires are prohibited at and above timberline.
- * Group size - limit group sizes to 15 people.
- * Sanitation - bury human waste 100 feet from water and 6 inches in the soil.

PACK IT IN - PACK IT OUT!! LEAVE NO TRACE!!

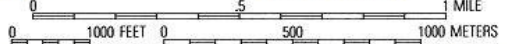
This map is intended for use as a general guide only, not for actual land navigation. The White River National Forest strongly suggests purchasing a topographic map and compass prior to your hiking trip.

106°29.000' W 106°28.000' W 106°27.000' W WGS84 106°26.000' W



106°29.000' W 106°28.000' W 106°27.000' W WGS84 106°26.000' W

TN MN
10°



Map created with TOPO!® ©2003 National Geographic (www.nationalgeographic.com/topo)

