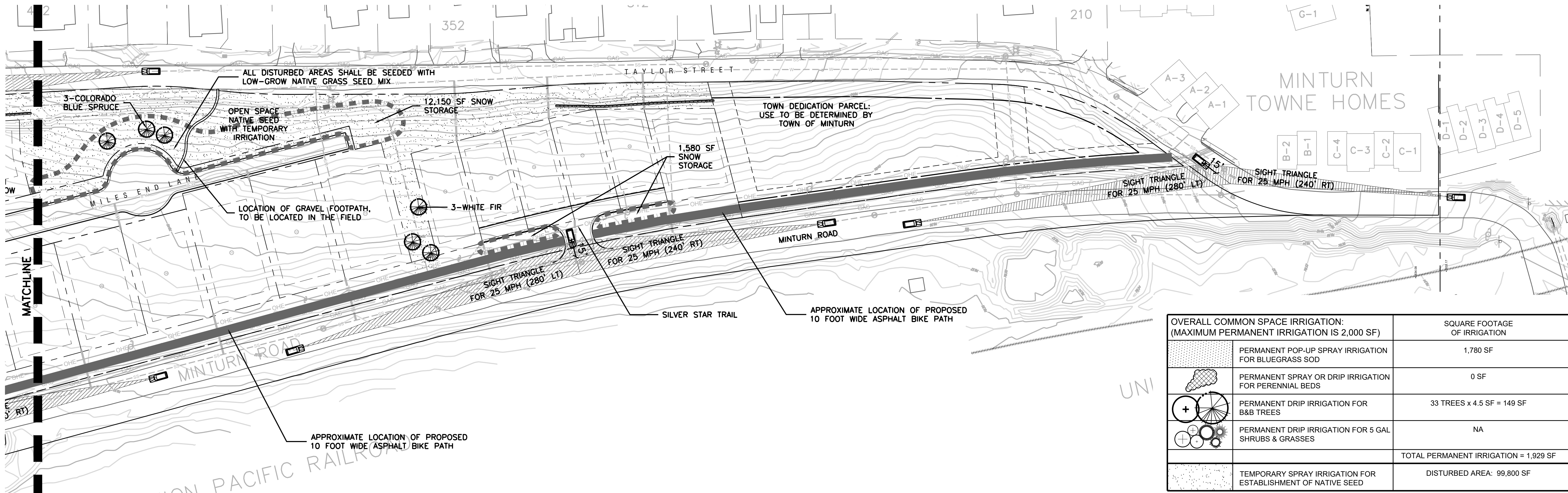


LEGEND

- PROPOSED NATIVE SEED WITH TEMPORARY IRRIGATION (SEE IRRIGATION NOTES L2)
- PROPOSED SOD WITH PERMANENT IRRIGATION
- PROPOSED SNOW STORAGE (REFER TO PLAN FOR SF)
- PROPOSED DECIDUOUS TREE
- PROPOSED 10 FT WIDE ASPHALT BIKE PATH

PROPOSED PLANT MATERIAL LIST FOR COMMON SPACE (CHOSEN FROM EXHIBIT B, MINTURN GUIDELINES):

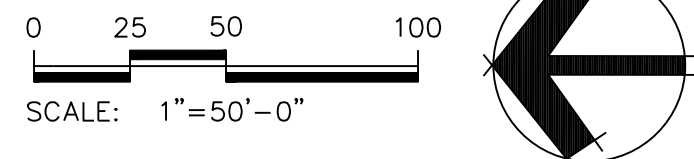
QUAN.	COMMON / BOTANICAL NAME	FIRE MITIGATION ZONE	SIZE	COMMENTS
EVERGREEN TREES				
6	Colorado Spruce <i>Picea pungens</i>	2	8' ht.	Specimen quality B&B, staked
3	White Fir <i>Abies concolor</i>	2	8' ht.	Specimen quality B&B, staked
DECIDUOUS TREES				
6	Amur Maple <i>Acer ginnala</i>	1 & 2	2.5" cal.	Specimen quality B&B, guyed
5	Patmore Ash <i>Fraxinus pennsylvanica</i> 'Patmore'	1 & 2	3" cal.	Specimen quality B&B, guyed
10	Quaking Aspen <i>Populus tremuloides</i>	1 & 2	2.5" cal.	Specimen quality B&B, guyed
3	Shubert Chokecherry <i>Prunus virginiana</i> 'Shubert'	1 & 2	3" cal.	Specimen quality B&B, guyed



OVERALL COMMON SPACE IRRIGATION: (MAXIMUM PERMANENT IRRIGATION IS 2,000 SF)		SQUARE FOOTAGE OF IRRIGATION
	PERMANENT POP-UP SPRAY IRRIGATION FOR BLUEGRASS SOD	1,780 SF
	PERMANENT SPRAY OR DRIP IRRIGATION FOR PERENNIAL BEDS	0 SF
	PERMANENT DRIP IRRIGATION FOR B&B TREES	33 TREES x 4.5 SF = 149 SF
	PERMANENT DRIP IRRIGATION FOR 5 GAL SHRUBS & GRASSES	NA
		TOTAL PERMANENT IRRIGATION = 1,929 SF
	TEMPORARY SPRAY IRRIGATION FOR ESTABLISHMENT OF NATIVE SEED	DISTURBED AREA: 99,800 SF

OVERALL LANDSCAPE PLAN

SCALE: 1"=50'-0"



LANDSCAPE ARCHITECT:  
TOMINA TOWNSEND, LA  
PO BOX 3000, PMB 301  
EDWARDS, CO 81632  
P. 303.572.7876  
TTownsend@ResortConceptsCO.com

MINTURN NORTH P.U.D.

TOWN OF MINTURN  
COUNTY OF EAGLE, STATE OF COLORADO

DESIGNED: Resort Concepts  
DRAWN: TT  
CHECKED: JT  
DATE: 9/28/2022  
REVISIONS:  
REVISED PUD PRELIMINARY PLAN: 4.11.23  
REVISED PUD PRELIMINARY PLAN: 6.2.23  
REVISED PUD PRELIMINARY PLAN: 7.18.23  
REVISED PUD PRELIMINARY PLAN: 8.21.23  
REVISED PUD PRELIMINARY PLAN: 10.30.23

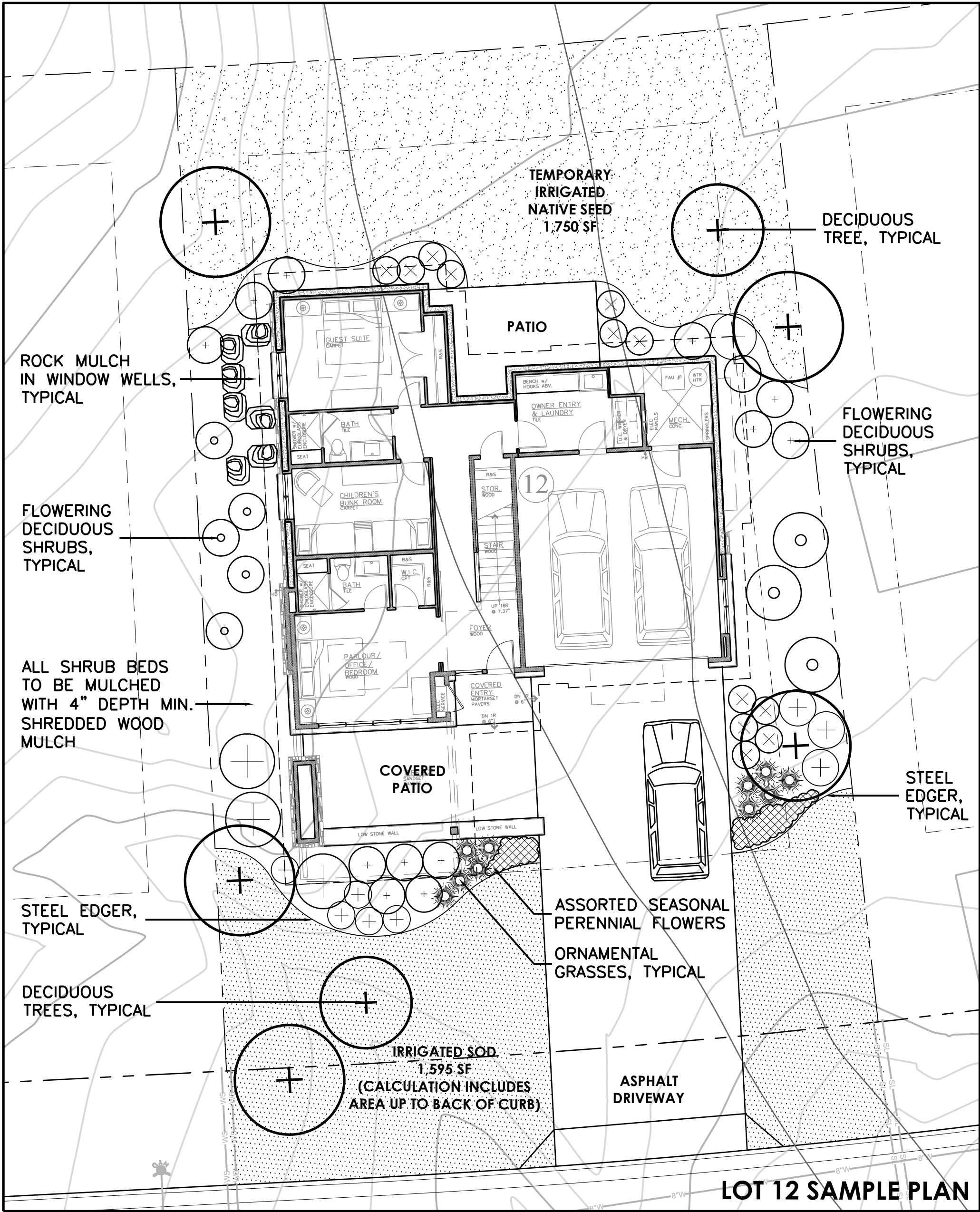
PUD PRELIMINARY PLAN

SHEET TITLE:  
LANDSCAPE PLAN

SCALE: 1"=50'-0"  
SHEET NUMBER:

L1





TYPICAL LOT LANDSCAPE ESTIMATED IRRIGATION: (LOTS 1-33 TOTAL MAX. PERMANENT IRRIGATION OF 2,000 SF)		
	PERMANENT POP-UP SPRAY IRRIGATION FOR BLUEGRASS SOD	1,595 SF
	PERMANENT SPRAY OR DRIP IRRIGATION FOR PERENNIAL BEDS	25 SF
	PERMANENT DRIP IRRIGATION FOR B&B TREES	7 TREES x 4.5 SF = 32 SF
	PERMANENT DRIP IRRIGATION FOR 5 GAL SHRUBS & GRASSES	55 SHRUBS x 3 SF = 165 SF
	TEMPORARY SPRAY IRRIGATION FOR NATIVE SEED	1,750 SF
TOTAL PERMANENT IRRIGATION = 1,817 SF		

## TYPICAL SINGLE FAMILY LANDSCAPE

SCALE: 1"=10'-0"

### General Notes and Specifications:

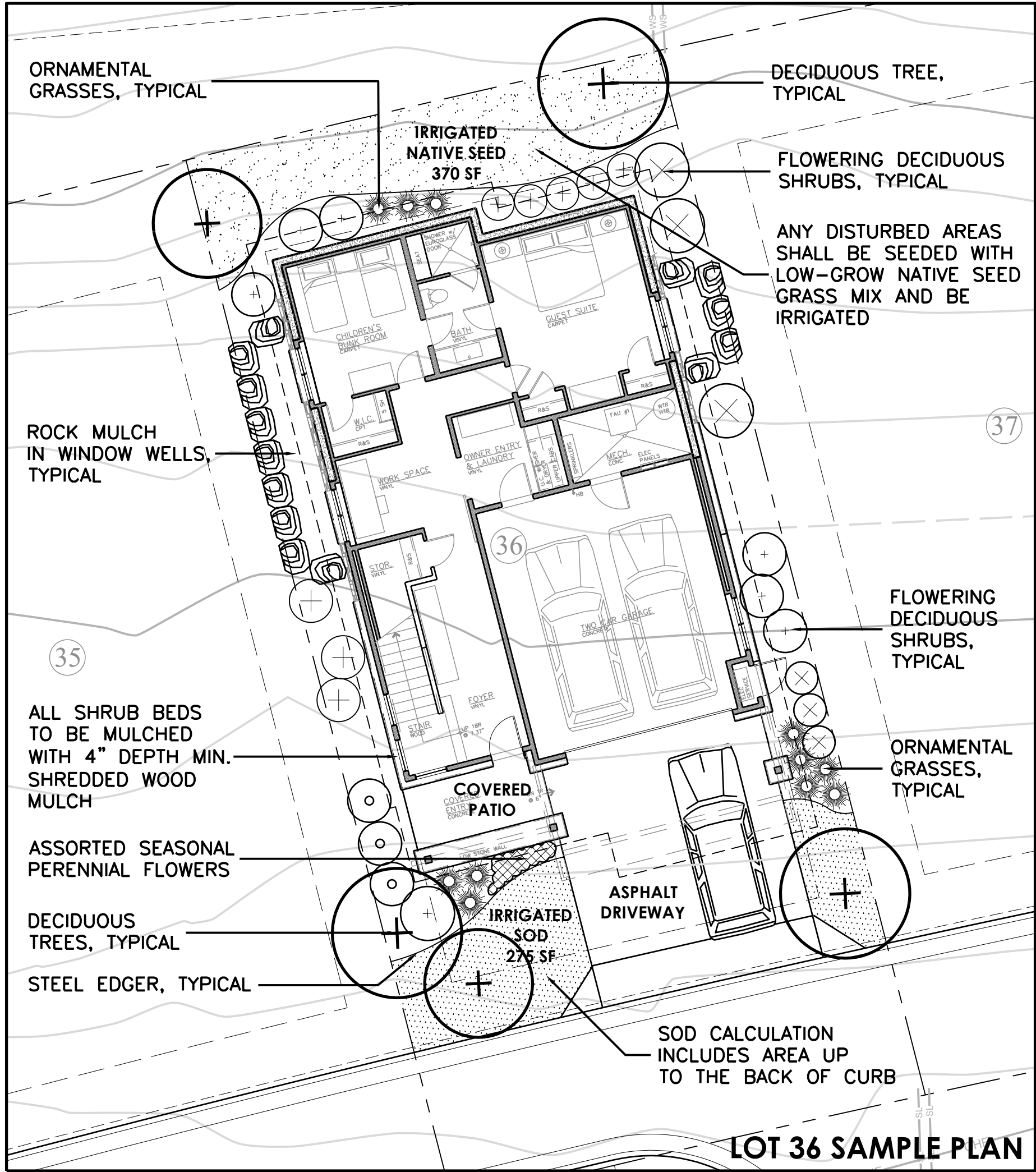
- All areas disturbed by construction and not designated a shrub bed or wildflower seed, shall be planted with the specified native grass seed.
- The contractor shall maintain positive drainage away from all walls and walkways. Fine grading shall be approved prior to planting.
- The Landscape Plan shall be reviewed on site prior to installation to ensure planting meets the intent of the design guidelines and county wildfire mitigation standards.
- Quantity and location of "natural" shrub plantings within Wildfire Mitigation Zone 2 shall be subject to field review by Wildfire Mitigation Officer.
- See Civil Engineering sheets for final grading and drainage.
- Snow Storage area shall be a min. of 25% of all driveway and parking areas.

### Revegetation Notes:

- Seed shall be broadcast and raked to 1/4" depth.
- Apply Biodegradable Green Dyed-Wood Cellulose-Fiber Mulch to all seeded Areas at a rate of 20 lbs. per 1,000 s.f.
- Prior to seeding, apply min. 6" topsoil, 10 lbs./1,000 s.f. Superphosphate and 40 lbs./1,000 s.f. Biosol Complete Fertilizer.

### Fire Mitigation Notes:

- Zone 1 (15' from building and integral planting): no flammable plants shall be planted within 15' of the structure or attachments.
- Zone 2 (70' from building and integral planting): a 10' crown separation must be maintained for all conifers and shrubs over 4'. A 4' crown separation must be maintained for shrubs under 4'.
- Plants listed on forest service publication 6.305 FireWise Plant Material can be used in any zone.
- Final existing vegetation to be limbed or removed will be subject to the constraints of the final unit site plans and reviewed on site with a representative from the Wildfire Mitigation Officer, the Minturn North DRB on a unit by unit basis prior to construction.



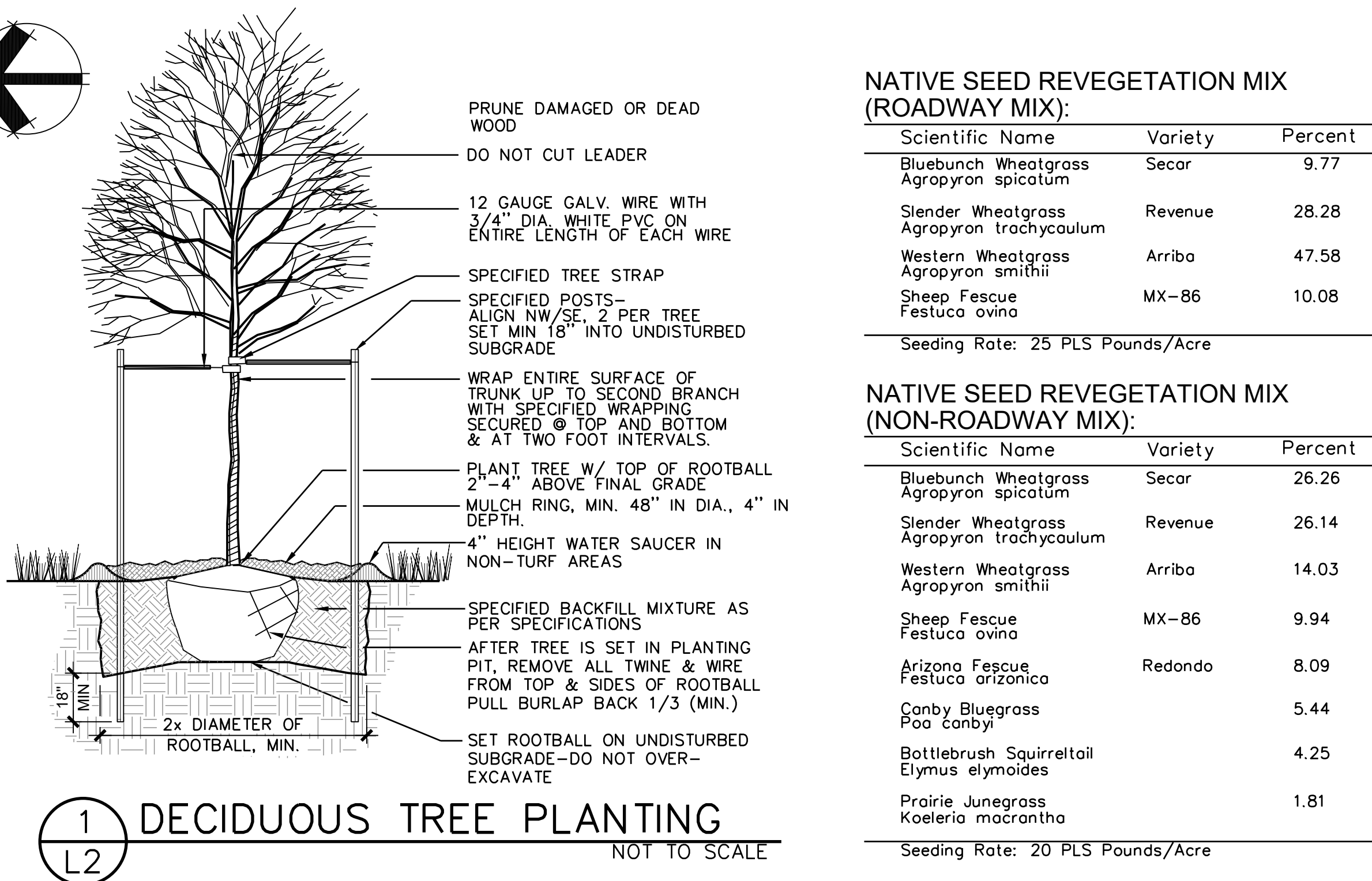
TYPICAL LOT LANDSCAPE ESTIMATED IRRIGATION: (LOTS 34-39 TOTAL MAX. PERMANENT IRRIGATION OF 2,000 SF)		
	PERMANENT POP-UP SPRAY IRRIGATION FOR BLUEGRASS SOD	275 SF
	PERMANENT SPRAY OR DRIP IRRIGATION FOR PERENNIAL BEDS	13 SF
	PERMANENT DRIP IRRIGATION FOR B&B TREES	5 TREES x 4.5 SF = 23 SF
	PERMANENT DRIP IRRIGATION FOR 5 GAL SHRUBS & GRASSES	35 SHRUBS x 3 SF = 105 SF
	PERMANENT SPRAY IRRIGATION FOR NATIVE SEED	370 SF
TOTAL PERMANENT IRRIGATION = 786 SF		

## TYPICAL LOCAL HOUSING LANDSCAPE

SCALE: 1"=10'-0"

### IRRIGATION NOTES:

- FOR THE SINGLE FAMILY LOTS (1-33), TOTAL PERMANENT IRRIGATION SHALL NOT EXCEED 2,000 SF. REFER TO TYPICAL LOT LANDSCAPE ABOVE FOR ESTIMATED IRRIGATED AREA CALCULATIONS.
- FOR THE LOCAL HOUSING LOTS (34-39), TOTAL IRRIGATION SHALL NOT EXCEED 2,000 SF. REFER TO TYPICAL LOT LANDSCAPE ABOVE FOR ESTIMATED IRRIGATED AREA CALCULATIONS.
- IRRIGATION DESIGN CRITERIA: DESIGN AUTOMATIC UNDERGROUND IRRIGATION SYSTEM TO UNIFORMLY IRRIGATE ALL PLANTING AREAS. ZONE IRRIGATED TURF GRASS AND SHRUB PLANTING AREAS SEPARATELY. PROVIDE DRIP IRRIGATION FOR SHRUB BEDS. PROVIDE MINIMUM 12 INCH POP-UP SPRAY HEADS IN ANNUAL, PERENNIAL, AND GROUND COVER BEDS. DESIGN ROTORS FOR TURF GRASS AREAS MORE THAN 40' WIDE. POP-UP SPRAY HEADS FOR AREAS LESS THAN 40' WIDE.
- ALL TREES AND SHRUBS TO BE DRIP IRRIGATED.



### PLANT LIST FOR TYPICAL LOT LAYOUT:

NOTE: ALL PLANT MATERIAL FOUND WITHIN 30' WILDFIRE DEFENSIBLE ZONE IS CHOSEN FROM THE CSU EXTENSION FIREWISE PLANT MATERIALS LIST-6.305

QUAN.	COMMON/ BOTANICAL NAME	FIRE MITIGATION ZONE	SIZE	COMMENTS
EVERGREEN TREES (ONLY TO BE LOCATED OUTSIDE THE 30' DEFENSIBLE ZONE)				
	Colorado Blue Spruce <i>Picea pungens</i>	2	8' ht.	Specimen quality B&B, staked
	Colorado Blue Spruce <i>Picea pungens</i>	2	10' ht.	Specimen quality B&B, staked
DECIDUOUS TREES				
	Quaking Aspen <i>Populus tremuloides</i>	1 & 2	2.5" cal.	Specimen quality B&B, guyed
	Quaking Aspen <i>Populus tremuloides</i>	1 & 2	3" cal.	Specimen quality B&B, guyed
	Amur Maple <i>Acer ginnala</i>	1 & 2	2.5" cal.	Specimen quality B&B, guyed
	Green Ash <i>Fraxinus pennsylvanica</i>	1 & 2	2.5" cal.	Specimen quality B&B, guyed
	Native Mountain Ash <i>Sorbus scopulina</i>	1 & 2	clump form	Specimen quality B&B, guyed
	Honeylocust <i>Gleditsia triacanthos</i>	1 & 2	2.5" cal.	Specimen quality B&B, guyed
PERENNIALS (Approximately X sf. @ 12" O.C. spacing)				
Assorted Perennials (All perennials to be chosen by landscape installer from FIREWISE PLANT MATERIALS LIST)				
	Blue Avena Grass <i>Helictotrichon sempervirens</i>	1 & 2	1 gal.	Container Full
	Little Bluestem <i>Schizachyrium scoparium</i>	1 & 2	1 gal.	Container Full
SEMI-EVERGREEN/BROADLEAF EVERGREEN SHRUBS				
	Common Mountain Mahogany <i>Cercocarpus montanus</i>	1 & 2	5 gal.	Container, 5 canes minimum 24"-36" ht.
DECIDUOUS SHRUBS				
	Arnold's Red Honeysuckle <i>Lonicera tatarica 'Arnold's Red'</i>	1 & 2	5 gal.	Container, 5 canes minimum 24"-36" ht.
	Burkwood Daphne <i>Daphne burkwoodii 'Somerset'</i>	1 & 2	5 gal.	Container, 5 canes minimum 18"-24" ht.
	Common Lilac <i>Syringa vulgaris</i>	1 & 2	5 gal.	Container, 5 canes minimum 24"-36" ht.
	Golden Currant <i>Ribes aureum</i>	1 & 2	5 gal.	Container, 5 canes minimum 24"-36" ht.
	Mountain Ninebark <i>Physocarpus monogynus</i>	1 & 2	5 gal.	Container, 5 canes minimum 12"-18" ht.
	Mountain Snowberry <i>Symphoricarpos oreophilus</i>	1 & 2	5 gal.	Container, 5 canes minimum 10"-12" ht.
	Redtwig Dogwood <i>Cornus stolonifera</i>	1 & 2	5 gal.	Container, 5 canes minimum 24"-36" ht.
	Saskatoon Serviceberry <i>Amelanchier alnifolia</i>	1 & 2	5 gal.	Container, 5 canes minimum 24"-36" ht.
	Boulder Raspberry <i>Rubus deliciosus</i>	1 & 2	5 gal.	Container, 5 canes minimum 18"-24" ht.
	Wax Flower <i>Jamesia americana</i>	1 & 2	5 gal.	Container, 5 canes minimum 24"-36" ht.
	Russet Buffaloberry <i>Shepherdia canadensis</i>	1 & 2	5 gal.	Container, 5 canes minimum 24"-36" ht.



Know what's below.  
Call before you dig.

LANDSCAPE ARCHITECT:  
TOMINA TOWNSEND, LA  
PO BOX 3000, PMB 301  
EDWARDS, CO 81632  
P. 303.572.7876  
TTownsend@ResortConceptsCO.com

MIN TURN NORTH P.U.D.

TOWN OF MINTURN  
COUNTY OF EAGLE, STATE OF COLORADO

DESIGNED: Resort Concepts  
DRAWN: TT  
CHECKED: JT  
DATE: 9/28/2022

REVISIONS:  
REVISED PUD PRELIMINARY PLAN: 4.11.23  
REVISED PUD PRELIMINARY PLAN: 6.2.23  
REVISED PUD PRELIMINARY PLAN: 7.18.23  
REVISED PUD PRELIMINARY PLAN: 8.21.23  
REVISED PUD PRELIMINARY PLAN: 10.30.23

### PUD PRELIMINARY PLAN

SHEET TITLE:  
LANDSCAPE  
NOTES & DETAILS

SCALE:  
SHEET NUMBER:

L2





LANDSCAPE ARCHITECT:  
TOMINA TOWNSEND, LA  
PO BOX 3000, PMB 301  
EDWARDS, CO 81632  
P. 303.572.7876  
TTownsend@ResortConceptsCO.com

MINTURN NORTH P.U.D.  
TOWN OF MINTURN  
COUNTY OF EAGLE, STATE OF COLORADO

DESIGNED: Resort Concepts  
DRAWN: TT  
CHECKED: JT  
DATE: 9/28/2022

REVISIONS:

REVISED PUD PRELIMINARY  
PLAN: 4.11.23

REVISED PUD PRELIMINARY  
PLAN: 6.2.23

REVISED PUD PRELIMINARY  
PLAN: 7.18.23

REVISED PUD PRELIMINARY  
PLAN: 8.21.23

REVISED PUD PRELIMINARY  
PLAN: 10.30.23

## PROPOSED PARK PLAN

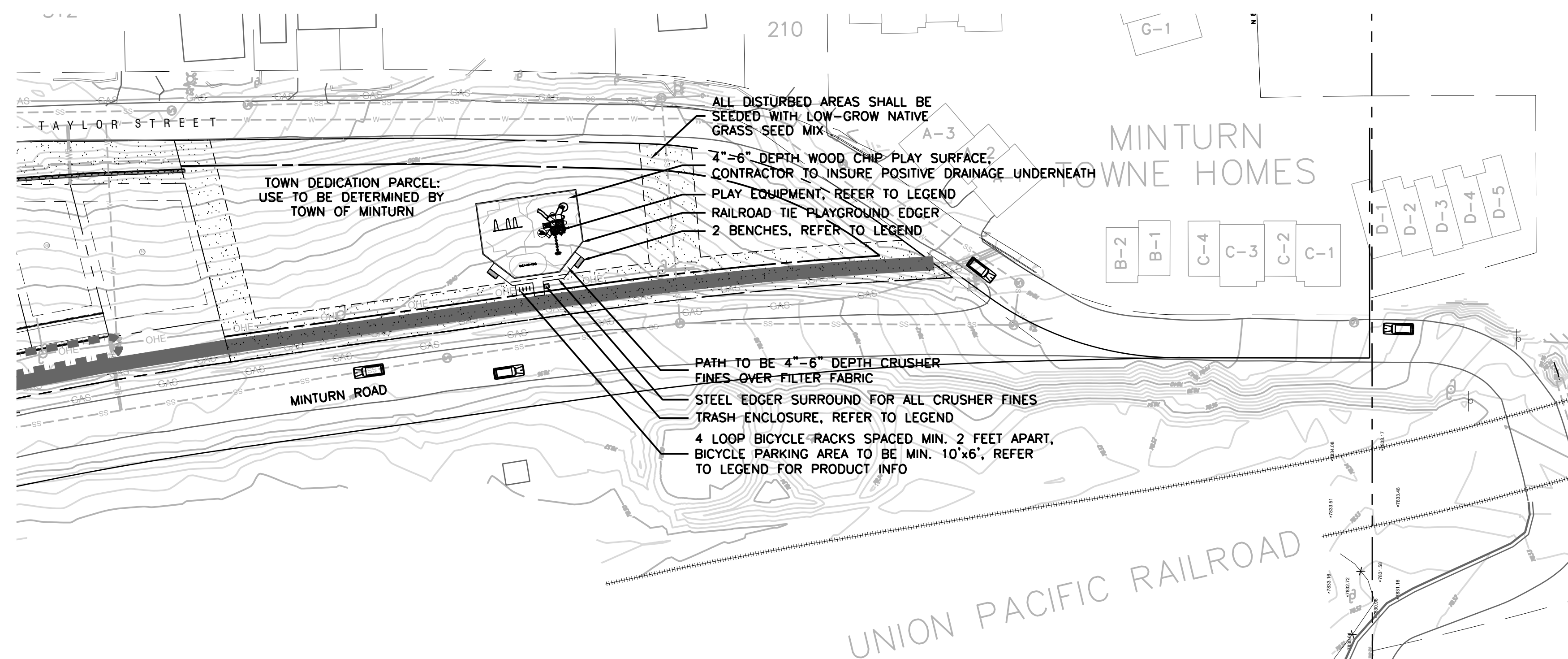
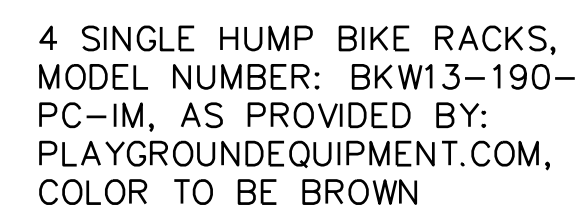
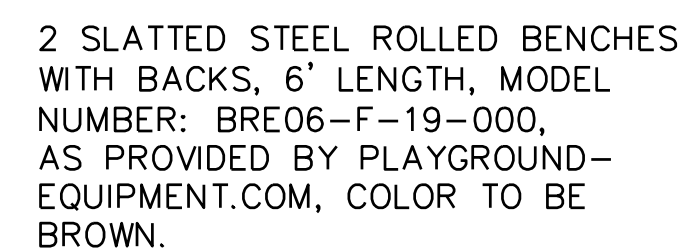
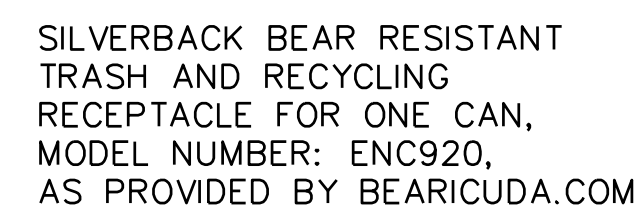
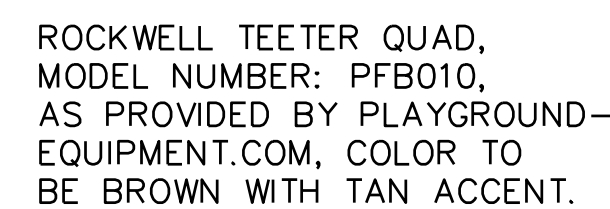
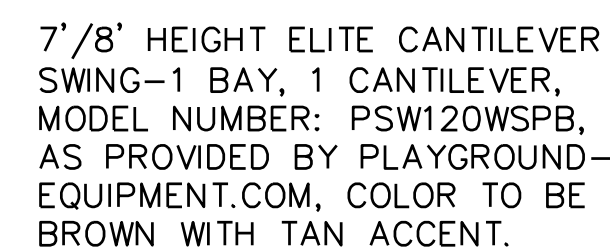
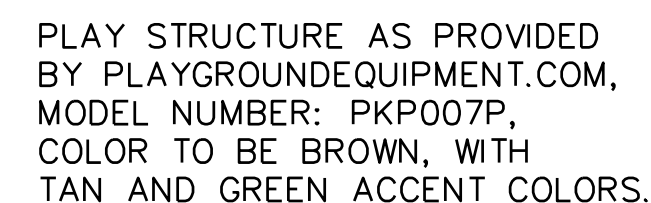
SHEET TITLE:  
LANDSCAPE  
PLAN

SCALE: 1"=50'-0"

SHEET NUMBER

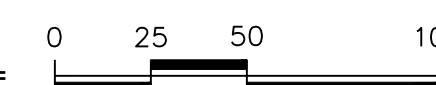
L3

## LEGEND

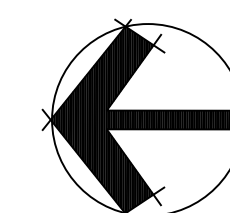


## PARK PLAN

SCALE: 1"=50'-0"



SCALE: 1"=50'-0"



IMAGES  
C:\Users\Sami\Desktop (Dropbox)\Share\Projects\1201-1250119-12009\map\NC MAP.jpg

FILE NAME	FILE SIZE	FILE TYPE	FILE DATE	FILE TIME	FILE LOCATION
C:\Report Concepts Projects\Winform North\Drawings\Win PUD Prelim Plan Udpd 8.17.23.dwg	1,045,420	DWG	08/17/2023	10:45:42	C:\Report Concepts Projects\Winform North\Drawings\Win PUD Prelim Plan Udpd 8.17.23.dwg
XREFS	1,045,420	DWG	08/17/2023	10:45:42	C:\Report Concepts Projects\Winform North\Drawings\Win PUD Prelim Plan Udpd 8.17.23.dwg
large to architecture [.....] Report Concepts Project\Winform North\XrefTarget for architecture.dwg	1,045,420	DWG	08/17/2023	10:45:42	C:\Report Concepts Projects\Winform North\Drawings\Win PUD Prelim Plan Udpd 8.17.23.dwg
small to architecture [.....] XrefTarget for architecture.dwg	1,045,420	DWG	08/17/2023	10:45:42	C:\Report Concepts Projects\Winform North\Drawings\Win PUD Prelim Plan Udpd 8.17.23.dwg
x-T-T-AN-PUD 24-09-Tile [.....] Report Concepts Project\Winform North\Xref-T-T-AN PUD 24-09-Tile.dwg	1,045,420	DWG	08/17/2023	10:45:42	C:\Report Concepts Projects\Winform North\Drawings\Win PUD Prelim Plan Udpd 8.17.23.dwg