

WELCOME
to the
Main Street
Pedestrian/Bicycle Plan
PUBLIC OPEN HOUSE
Please sign in

Presented by:



MAIN STREET PEDESTRIAN/BICYCLE PLAN PROJECT OVERVIEW MAP

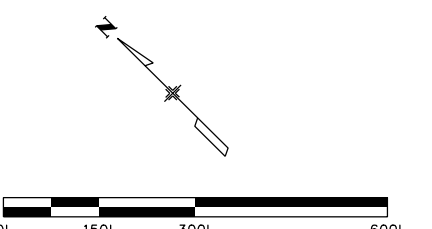
SEGMENT 3
PROVIDE BICYCLE
FACILITIES TO MALOIT
PARK ROAD



SEGMENT 1
EXTEND THE DOWNTOWN
CORRIDOR

SEGMENT 2
PROVIDE PEDESTRIAN AND
BICYCLE FACILITIES THROUGH
SOUTH MINTURN

JUNE 7, 2016



Benefits of Walkable/Bikeable Communities



Improved safety for users



Provides transportation choices




Improved economy



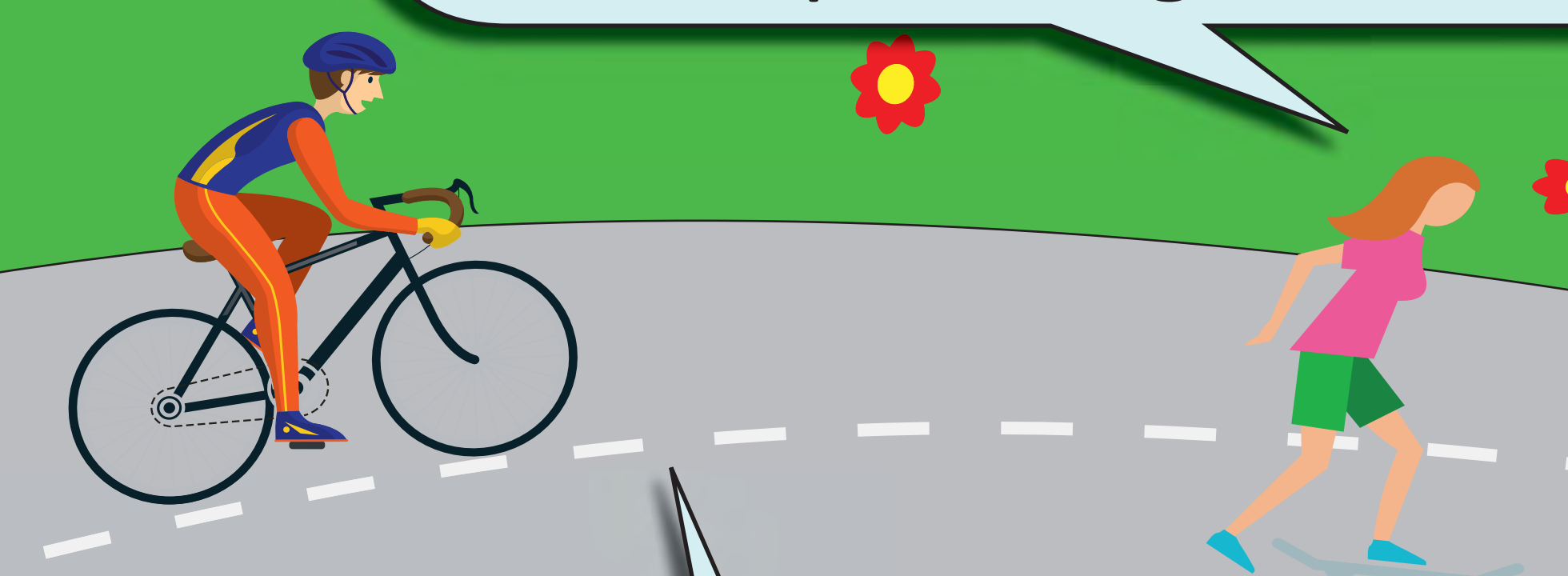
Improved health

Project Goals

Main Street Pedestrian/Bike Plan




Improve and increase accessibility for pedestrians and cyclists, while expanding on recreational and economic development opportunities.




Maintain compatibility with the intent of previous local planning efforts.



Enhance safety of the travel corridor for all users.



Advance improvements that can be implemented and maintained easily.



Minimize impacts to the adjacent community.

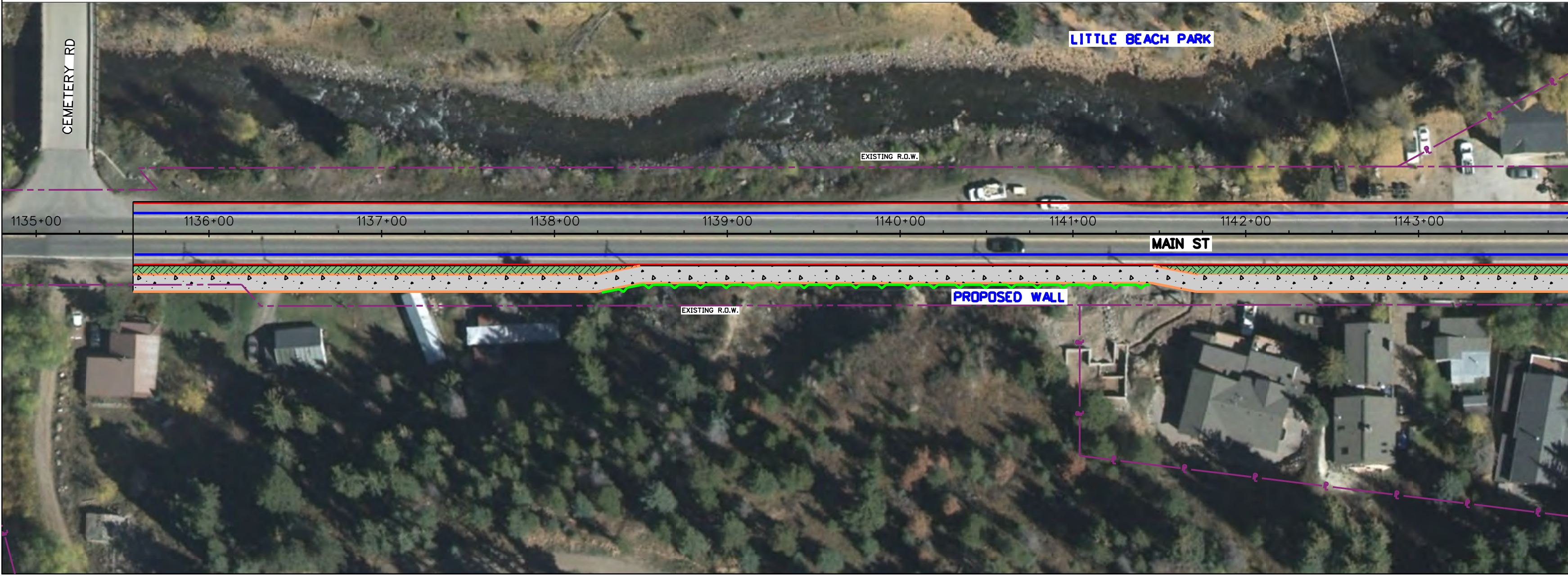
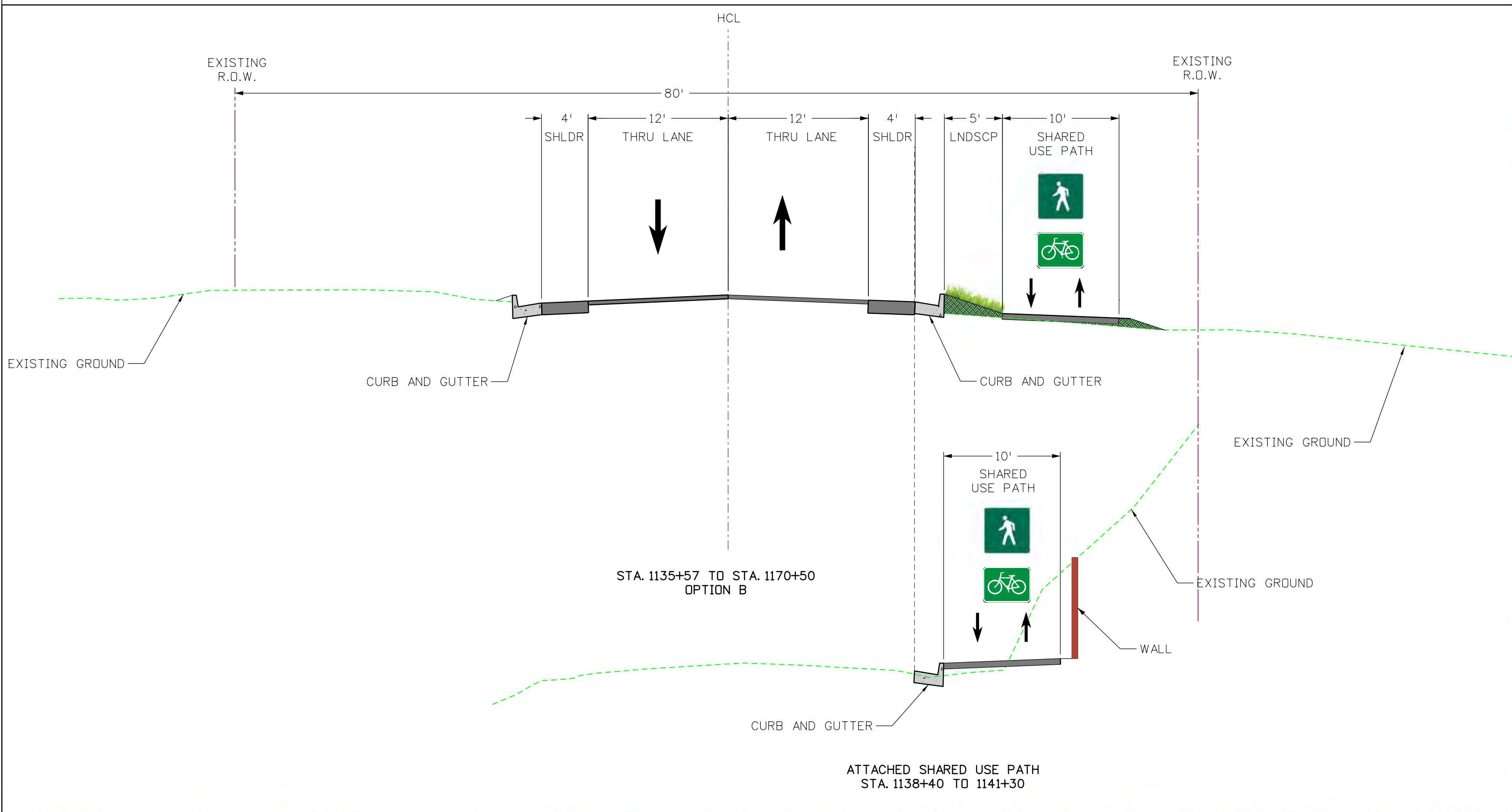
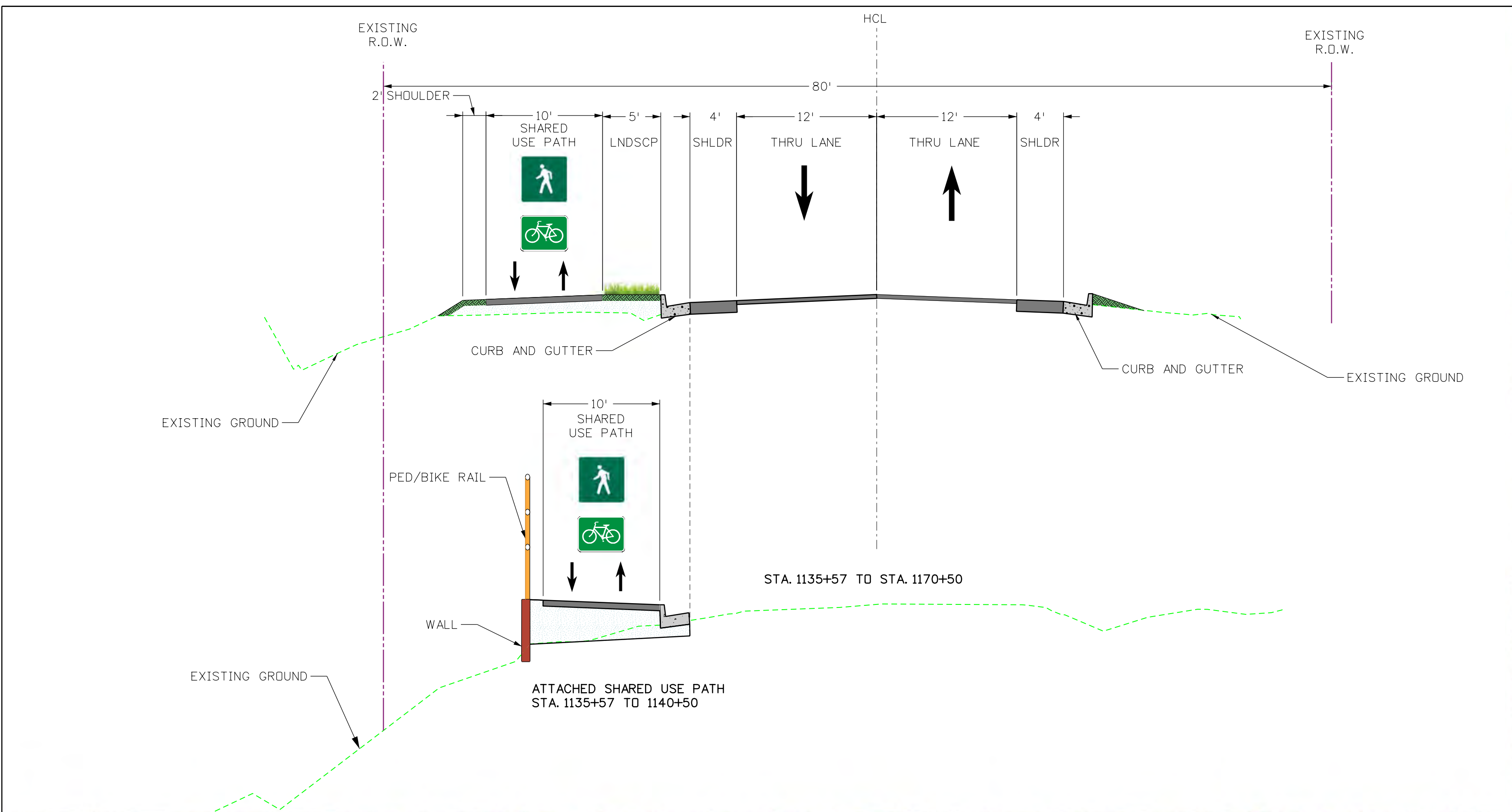
Segment 2 Evaluation

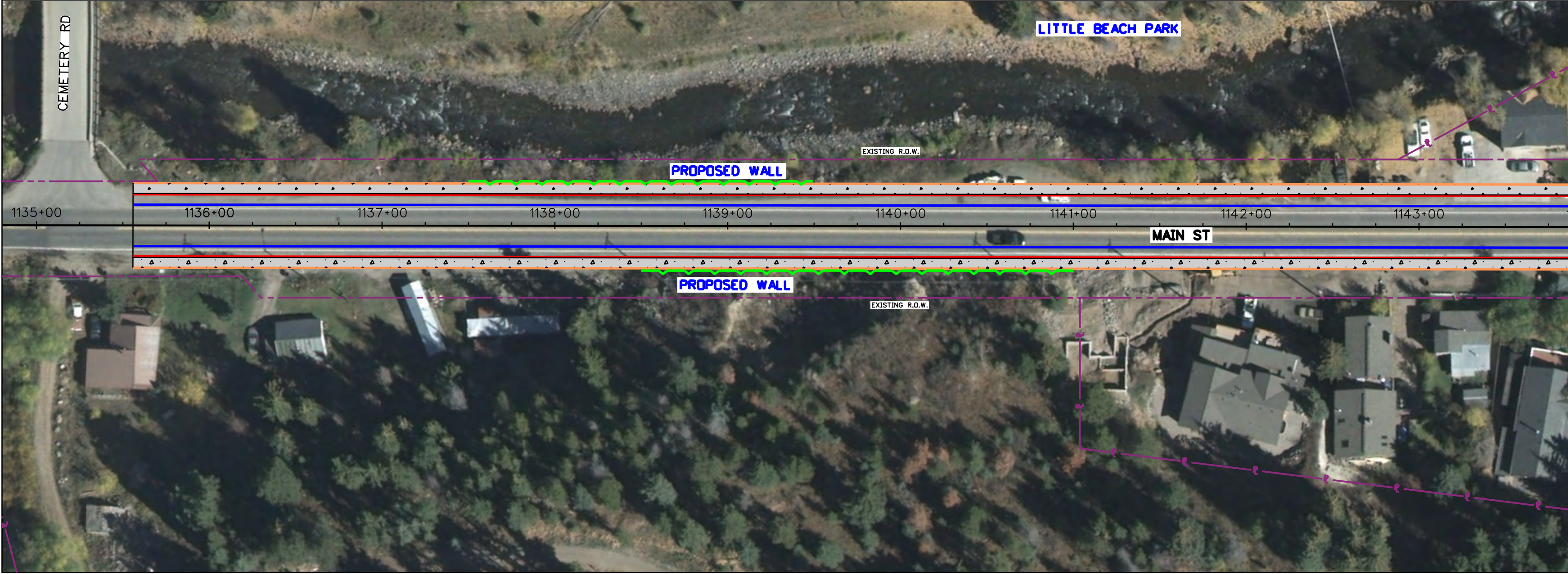
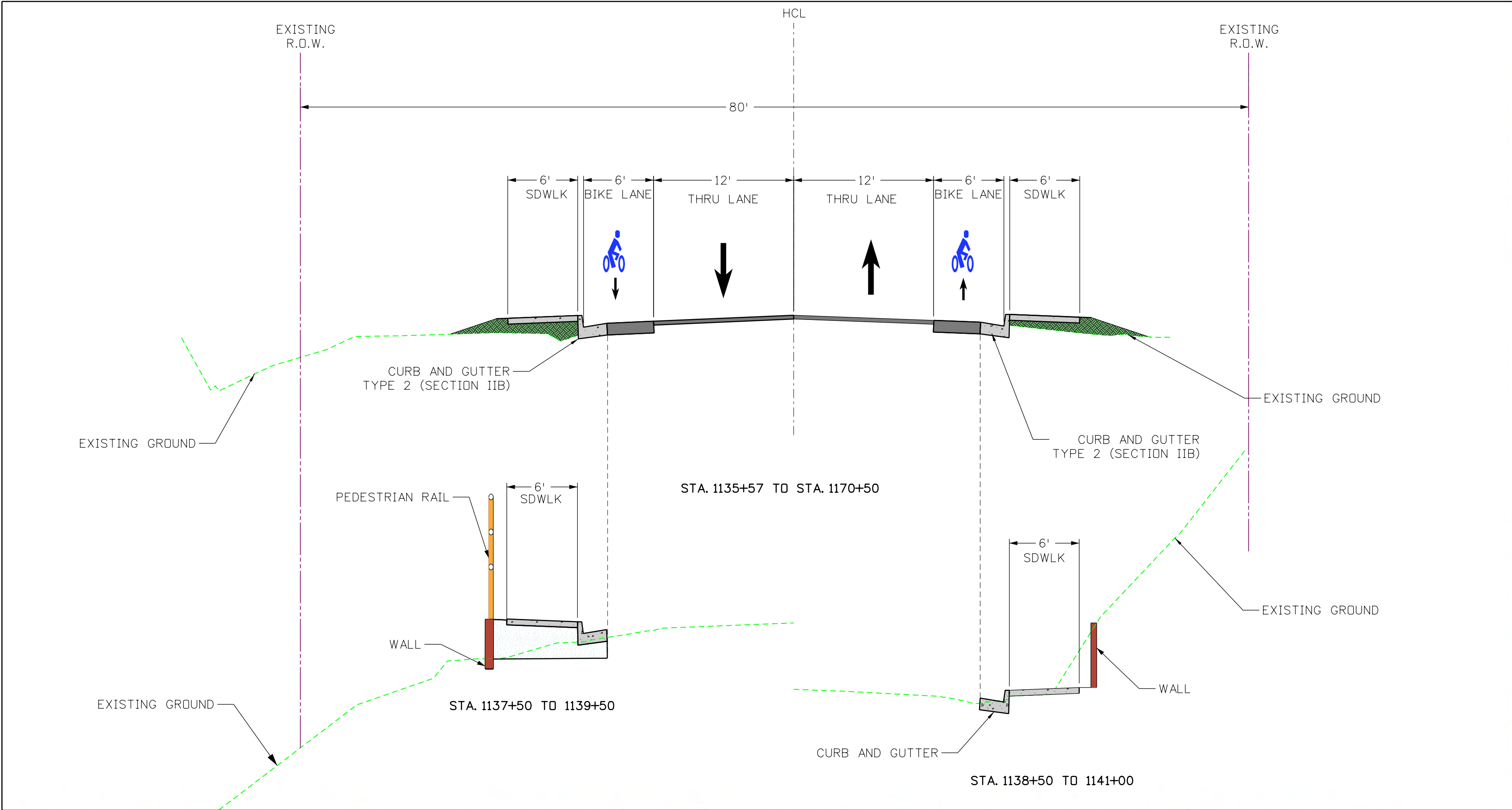
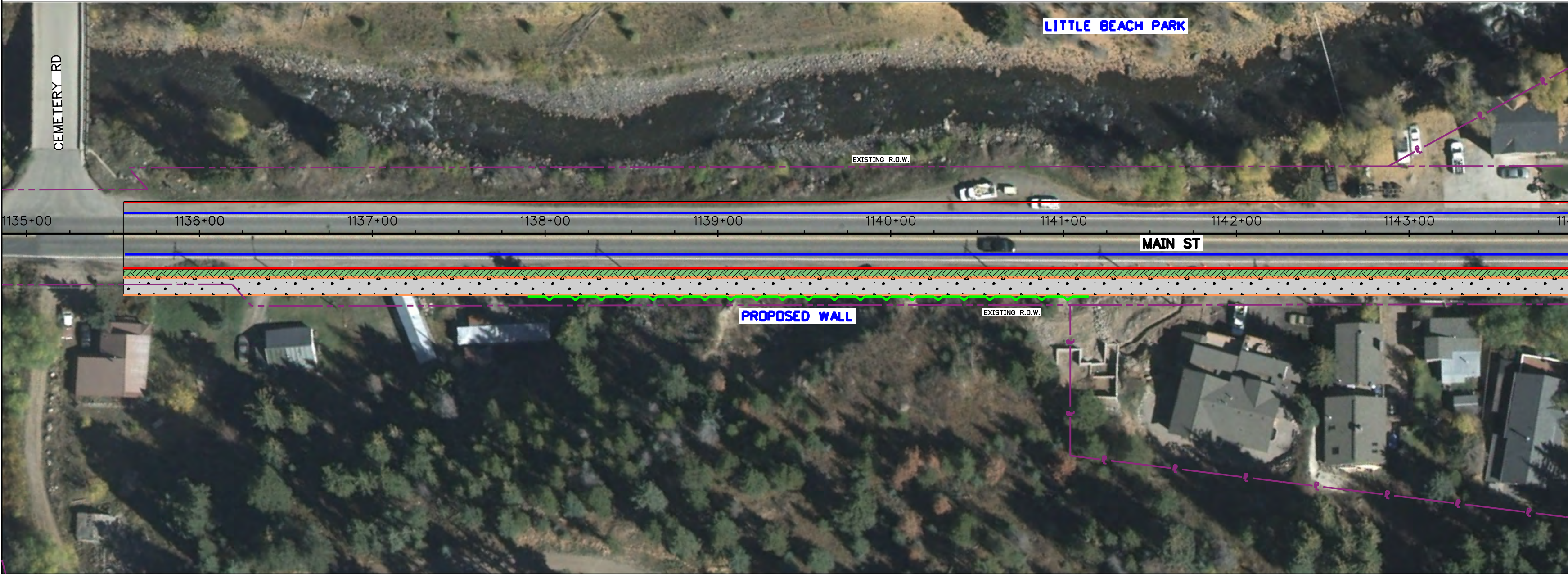
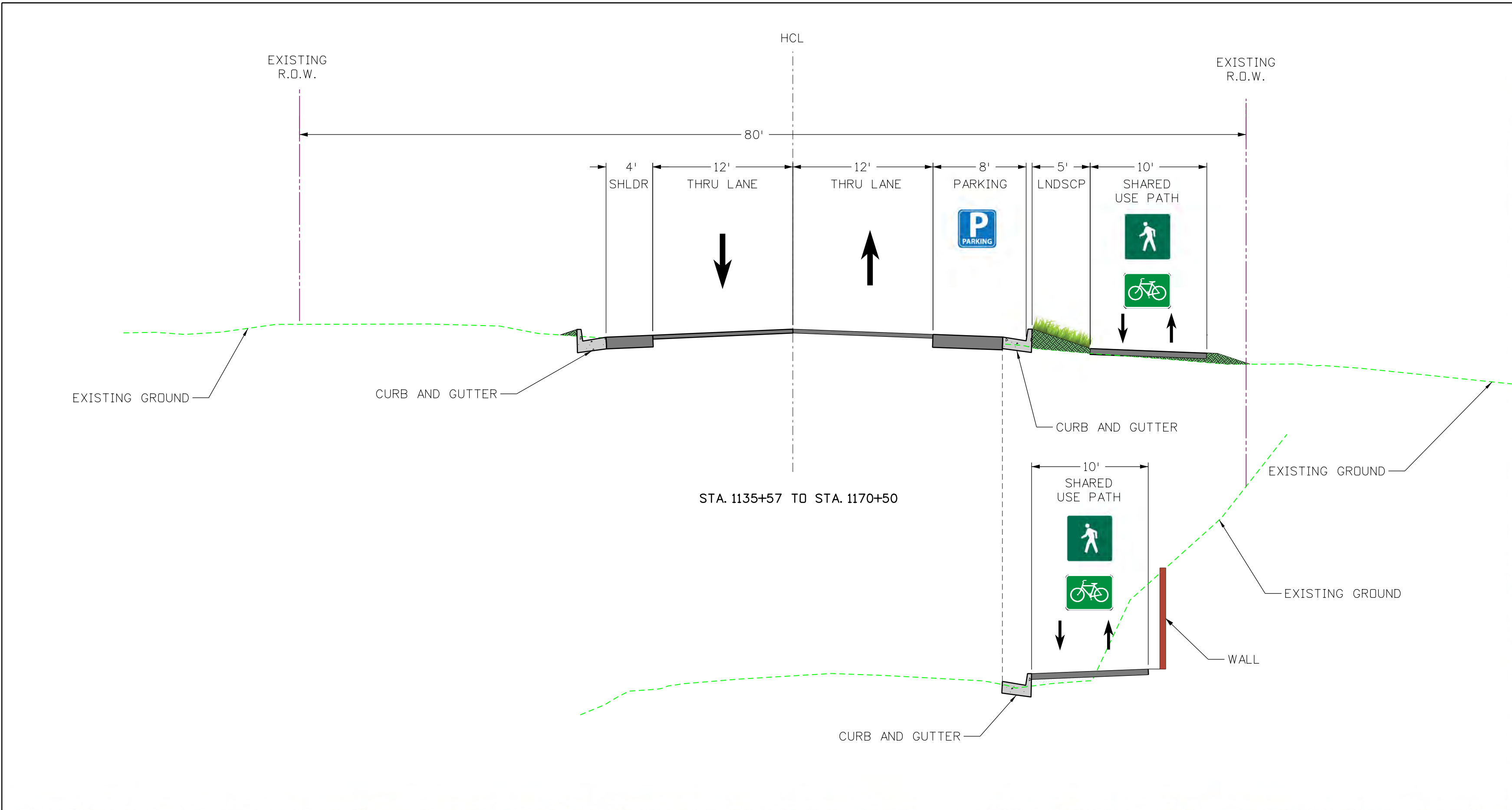
| Project Goal | Evaluation Criteria | Option A | Option B | Option C | Option D | No Build |
|--|----------------------------------|----------|----------|----------|----------|----------|
| Improve and increase accessibility for pedestrians and cyclists, while expanding on recreational and economic development opportunities. | Pedestrian Accessibility | ◐ | ◐ | ◐ | ● | ○ |
| | Bicycle Accessibility | ◐ | ◐ | ◐ | ● | ○ |
| | Recreational Activity Access | ● | ◐ | ◐ | ● | ○ |
| | Economic Development | ○ | ◐ | ◐ | ● | ○ |
| | Transit Accessibility | ◐ | ◐ | ◐ | ● | ○ |
| Enhance safety of the travel corridor for all users. | Crossings | ○ | ○ | ○ | ● | ○ |
| | Bicycle Users | ● | ● | ● | ◐ | ○ |
| | Vehicular Conflict Potential | ● | ● | ● | ◐ | ○ |
| Advance improvements that can be implemented and maintained easily. | Construction Cost | ◐ | ◐ | ○ | ● | ● |
| | Project Clearances | ◐ | ◐ | ○ | ● | ● |
| | Maintenance | ● | ● | ◐ | ◐ | ○ |
| | Snow Storage and Removal | ● | ● | ● | ◐ | ○ |
| | Short-Term Phasing Opportunities | ◐ | ◐ | ◐ | ● | N/A |
| Minimize impacts to the adjacent community. | Private Property Impacts (ROW) | ◐ | ◐ | ◐ | ● | ● |
| | Proximity to Buildings | ◐ | ○ | ○ | ● | ● |
| | Parking Impacts | ○ | ○ | ◐ | ○ | ● |
| Maintain compatibility with the intent of previous local planning efforts. | Drainage Improvements | ● | ● | ● | ● | ○ |
| | Local Support | TBD | TBD | TBD | TBD | TBD |

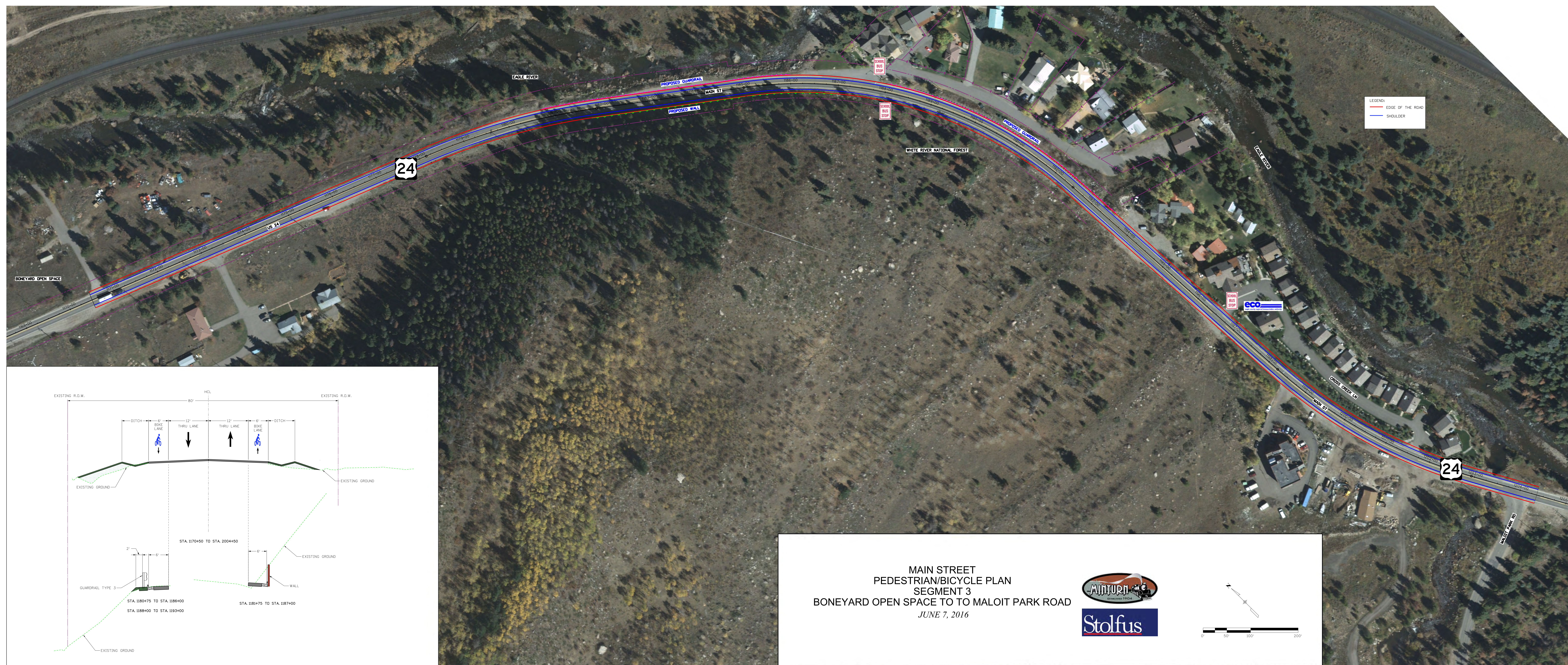
Legend: ● Favorable (expands upon the standard) ◐ Neutral (meets the standard) ○ Unfavorable (falls short of the standard)











Schedule & Next Steps

June

- Public Open House #1 (June 7 from 4:00pm - 7:00pm at Minturn Town Hall)
- First set of One-on-One Meetings (June 29 & 30 at Minturn Town Hall)

July

- Ongoing preliminary design
- Preliminary plan submittal

August

- TAP Grant application for construction due
- Begin final design

September

- Ongoing final design
- Second set of One-on-One Meetings

October

- Town Council Meeting #2
- Public Open House #2

November

- Final plan submittal
- DOLA Grant application for construction

