



# MAIN STREET (HWY 24) PEDESTRIAN/BICYCLE PLAN

TOWN COUNCIL MEETING

December 7, 2016



# Project Update

- The Town of Minturn received a Transportation Alternatives Program (TAP) Grant for Construction to provide pedestrian and drainage improvements along Main Street (Hwy 24). Total amount available: \$1,540,000, awarded in October 2016.
- The Town prioritized the following segments of the project to move forward in design and construction:



## Segment 2: Cemetery Road to Boneyard Open Space

- Provide sidewalk and parallel parking on both sides of the road. Drainage improvements included.

## Segment 1: Meek Avenue to Cemetery Road

- Sidewalk on both sides of the road; parking on the west side between Meek Avenue and Mann Street. Widen narrow sidewalk on east side. Drainage improvements included.



# Funding Breakdown

- Two different funding scenarios have been identified by the Town:
  - **Alternative 1:** Combine 2018 TAP Grant with RPP funding (*Currently have*)
  - **Alternative 2:** Combine 2018 TAP Grant with a 50/50 DOLA Grant match and RPP funding (*Future possibility*)

Funding Source	Alternative 1	Alternative 2
TAP Grant 20% local match	\$240,000	\$240,000
TAP Grant 80% federal match	\$960,000	\$960,000
<i>TAP Grant Subtotal</i>	<i>\$1,200,000</i>	<i>\$1,200,000</i>
DOLA Grant 50/50 match with TAP	N/A	\$1,200,000
RPP Funding	\$340,000	\$340,000
<b><i>Total</i></b>	<b><i>\$1,540,000</i></b>	<b><i>\$2,740,000</i></b>

# Construction Funding – What does that get us?

## FUNDING ALTERNATIVE 1

- Improvements on the east side of Main Street in Segment 2 from Cemetery Road to the Boneyard Open Space.



## FUNDING ALTERNATIVE 2

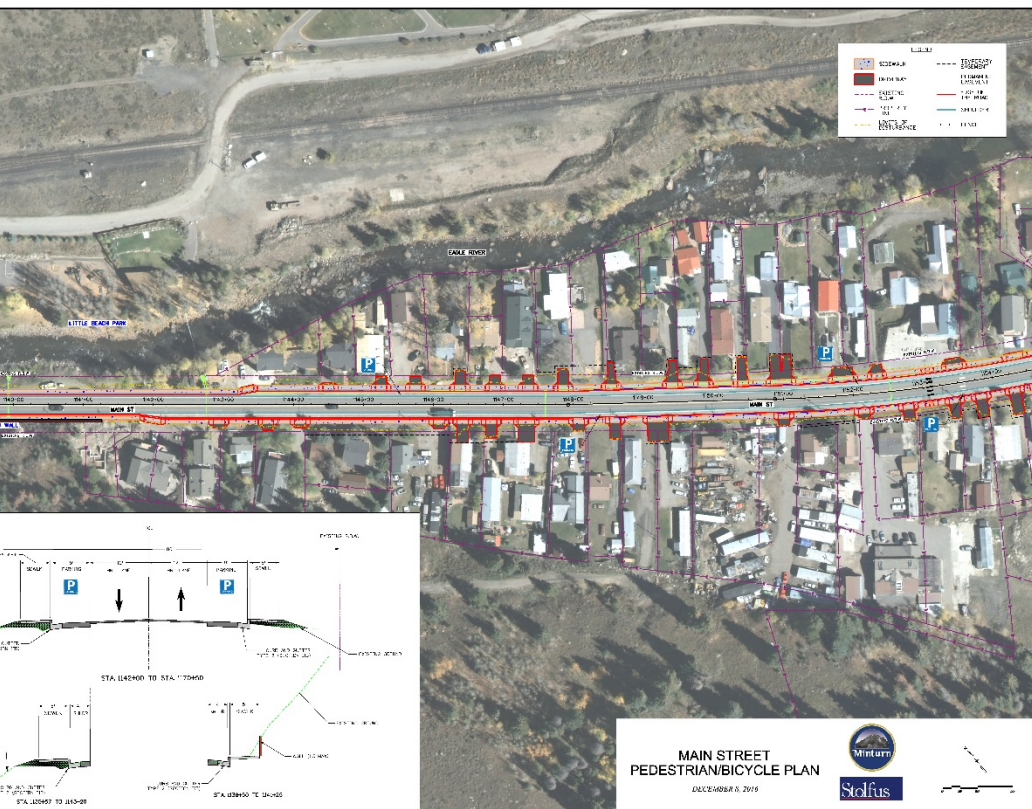
- Improvements down both sides of Main Street in Segment 2.
- Improvements on the east side of Main Street between the Enclave and Cemetery Road where the sidewalk is narrow today.
- Improvements on the west side of Main Street between Meek Avenue and Cemetery Road.



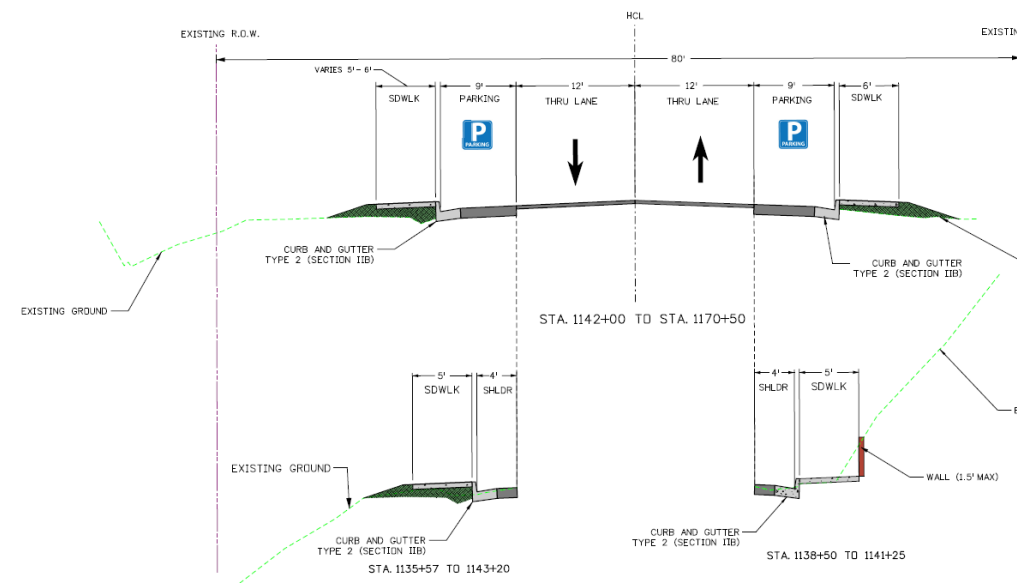
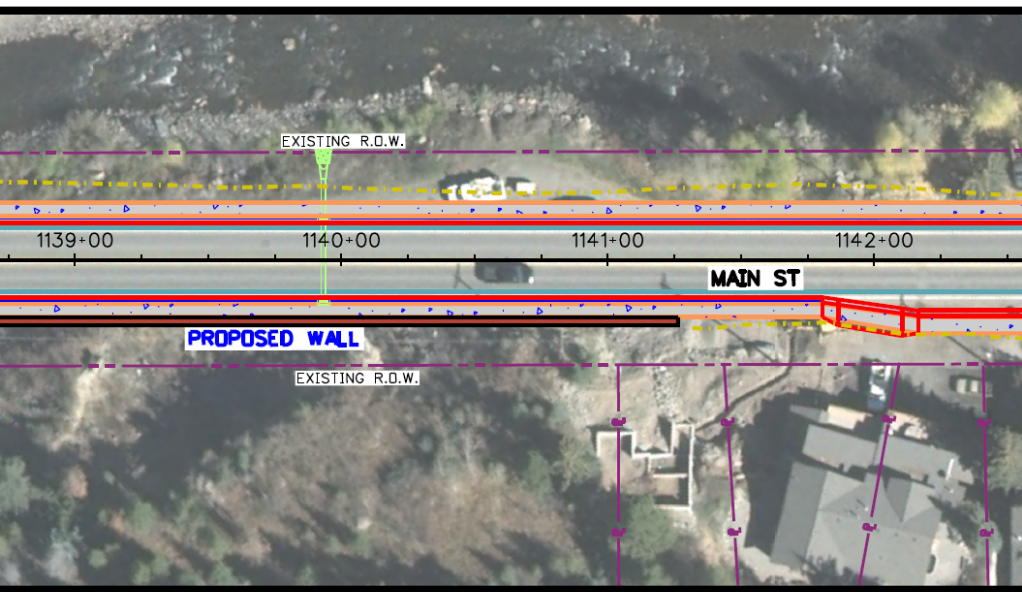
Exact limits of construction will be determined during Final Design to match available funding.



# Segment 2

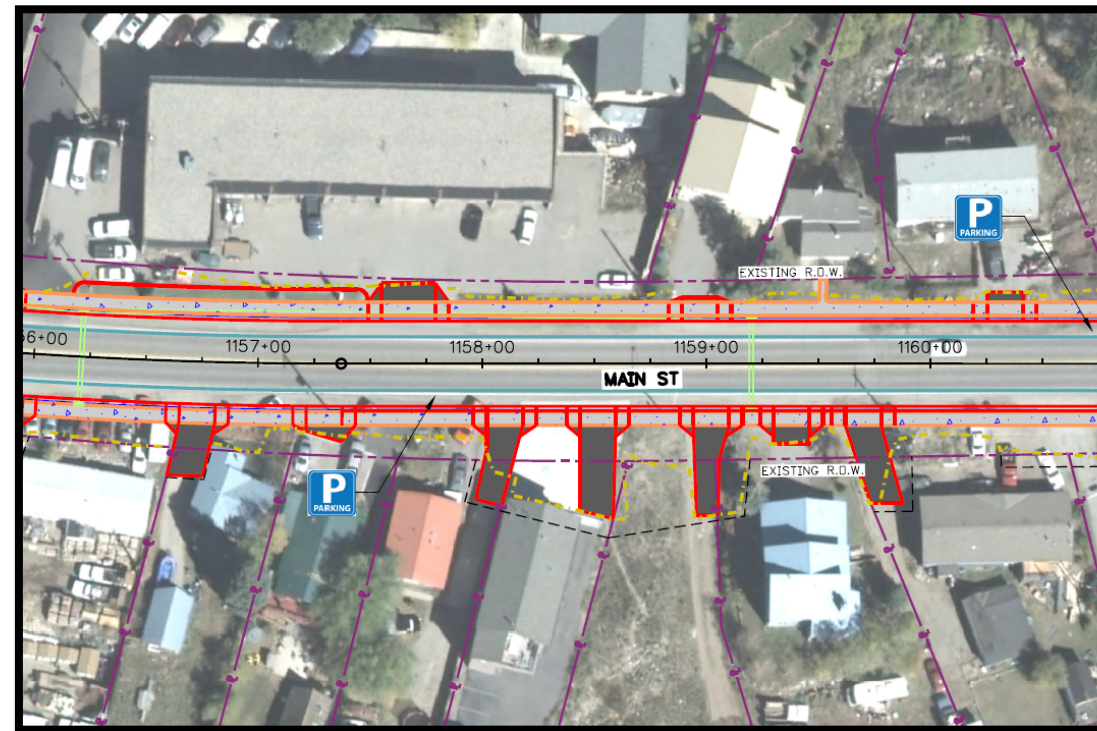
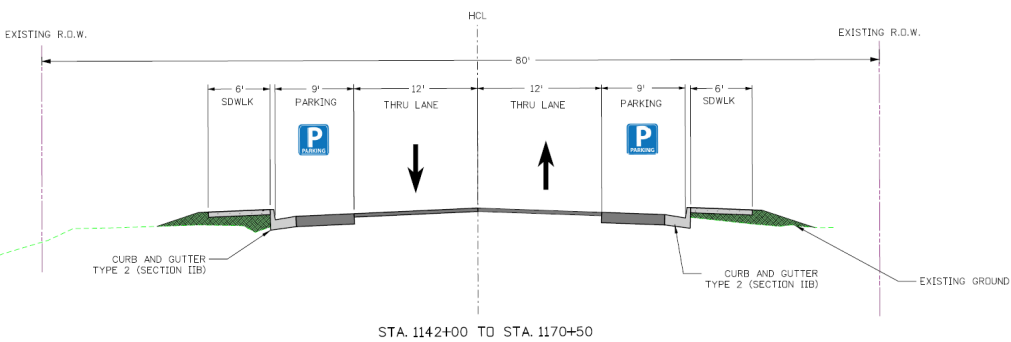


# Segment 2



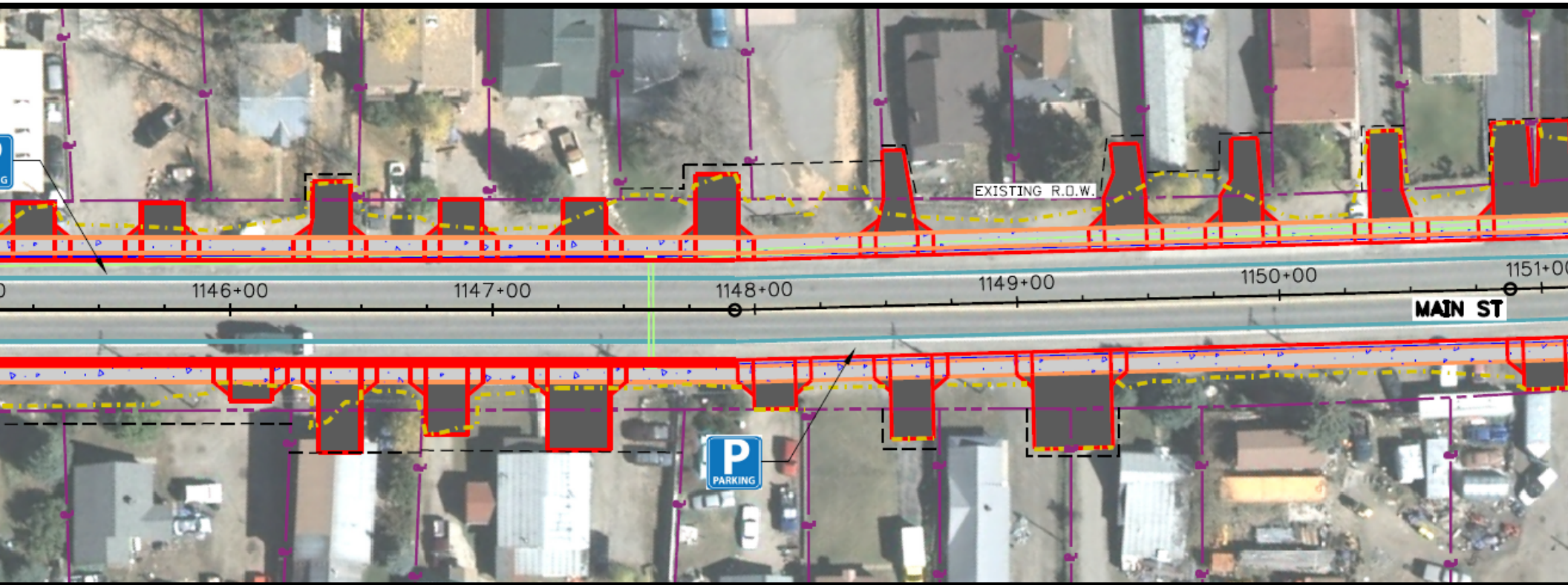


# Segment 2





# Segment 2 – Driveway Tie-ins

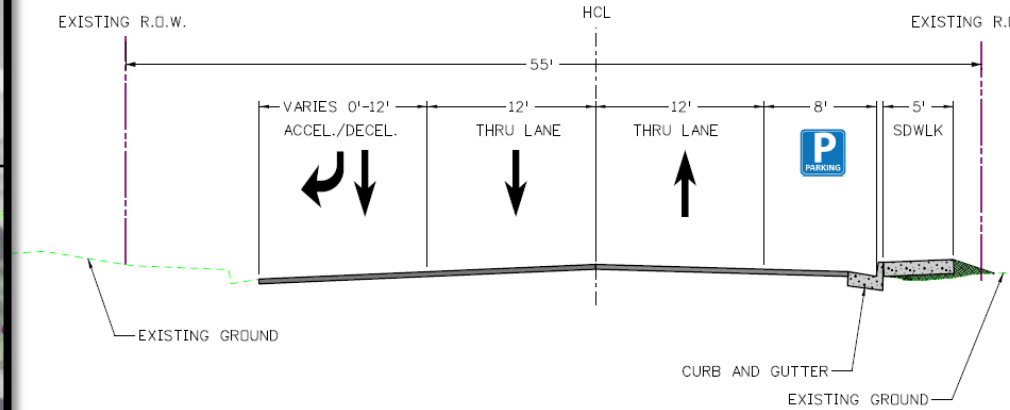
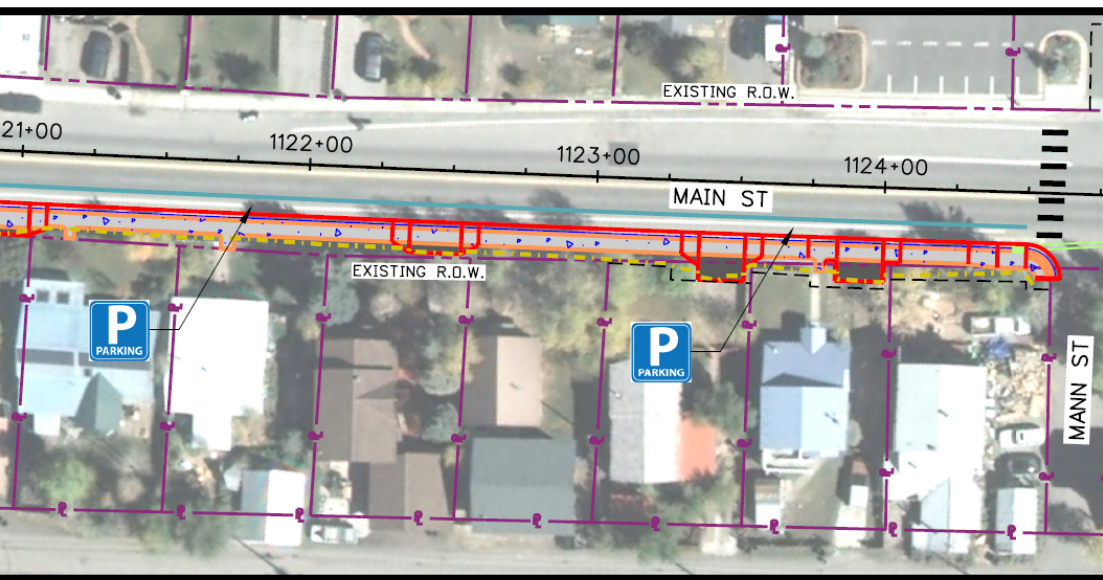


# Segment 1





# Segment 1

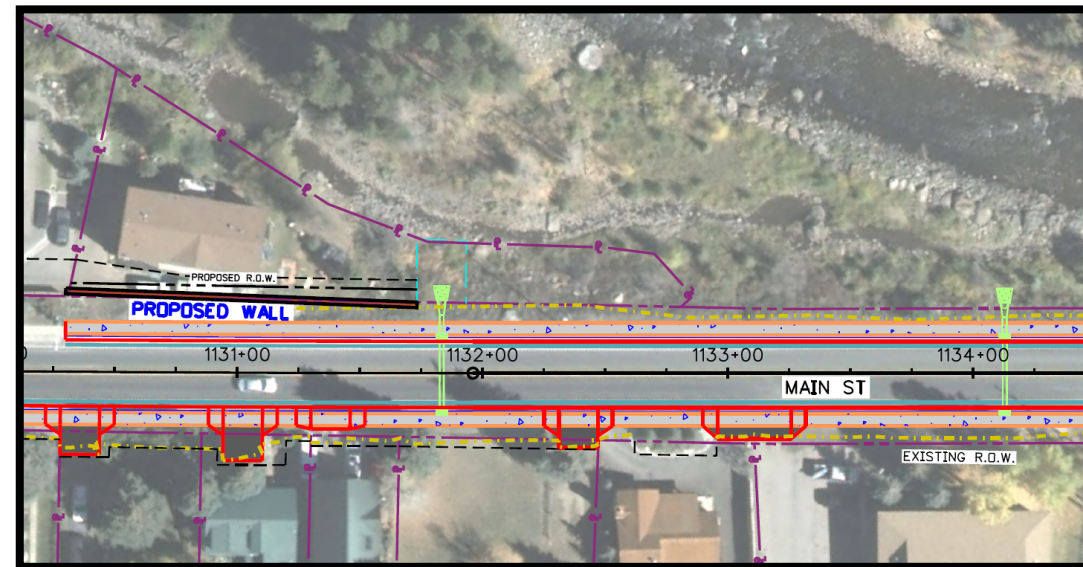
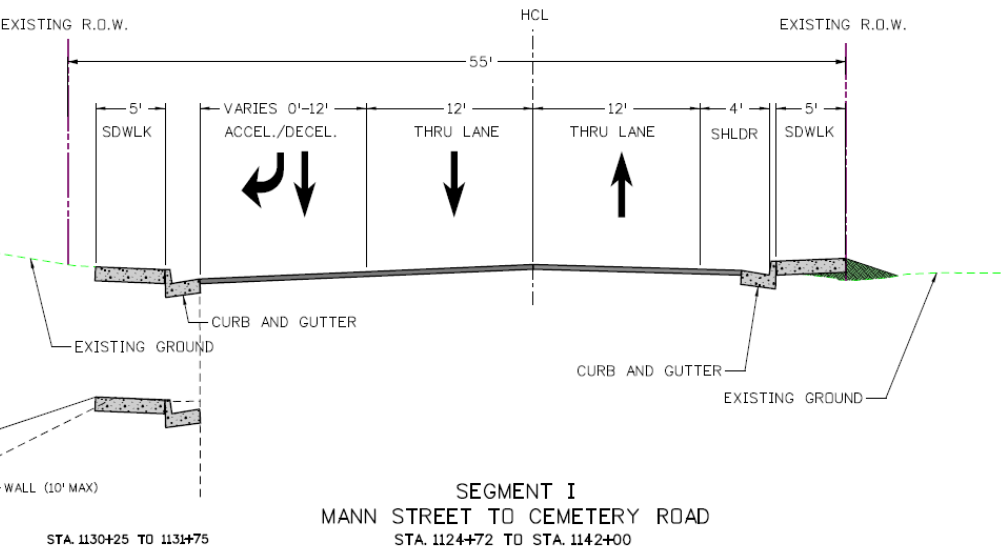


SEGMENT I  
MEEK AVENUE TO MANN STREET  
STA. 1120+50 TO STA. 1124+72



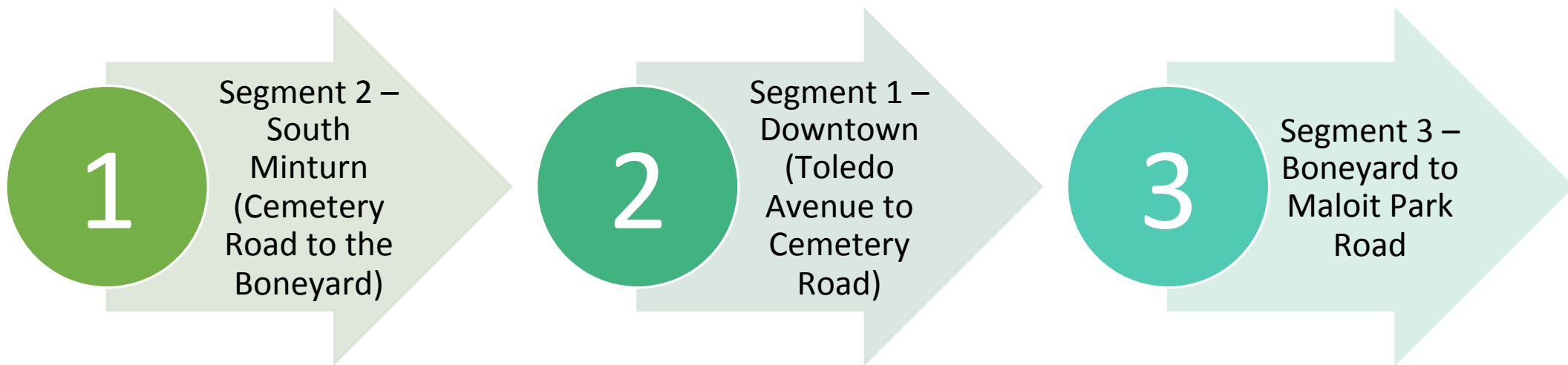


# Segment 1



# Priority of Implementation – Remains the Same

---



# Updates – What we've done since the last meeting

---

- Submitted FIR Plans to CDOT; held a plan review with several CDOT representatives
- Found cost-saving opportunities, such as reducing wall needs
- Refined design and clearance path forward based on available Grant funding
- Defined environmentally sensitive boundaries:
  - Wetlands
  - Floodplain
  - Open Waters of the U.S.
- Surveyed for historic properties in the project boundaries:
  - Structures approximately 50 years old or older
- Defined property impacts for right-of-way plans in preparation for acquisition
- Met with CDOT on driveways





# Public Outreach

---

## PUBLIC OPEN HOUSE

**Thursday, December 8<sup>th</sup>**

3:00 pm – 7:00 pm

Available to discuss specific design elements and impacts to property owners.

## ONE-ON-ONE MEETINGS

**January 2017**

Sign-up sheet available at Open House

We will meet with people specifically affected by elements moving forward to review driveways, property impacts, etc.

# Schedule – What's Next

---

- ❖ Geotechnical Investigations – **December 2016 (pending weather)**
- ❖ Environmental Clearance – **May 2017**
- ❖ FOR Design Plans – **Spring 2017**
- ❖ ROW Acquisition – **Approximately 1 year duration, beginning in 2017**
- ❖ State of Colorado DOLA Grant Application – **2017/2018**
- ❖ CDOT Resurfacing Project – **Spring 2019**
- ❖ Minturn Project – **On or before Spring 2019, should begin before or at the same time as CDOT**

# Questions?





# Thank You!

Contact information:

---

**Willy Powell**

Town Manager - Town of Minturn

[manager@minturn.org](mailto:manager@minturn.org)

(970) 827-5645



**Jenna Frye, PE**

Stolfus and Associates, Inc.

[jenna@stolfusandassociates.com](mailto:jenna@stolfusandassociates.com)

(303) 221-2330

