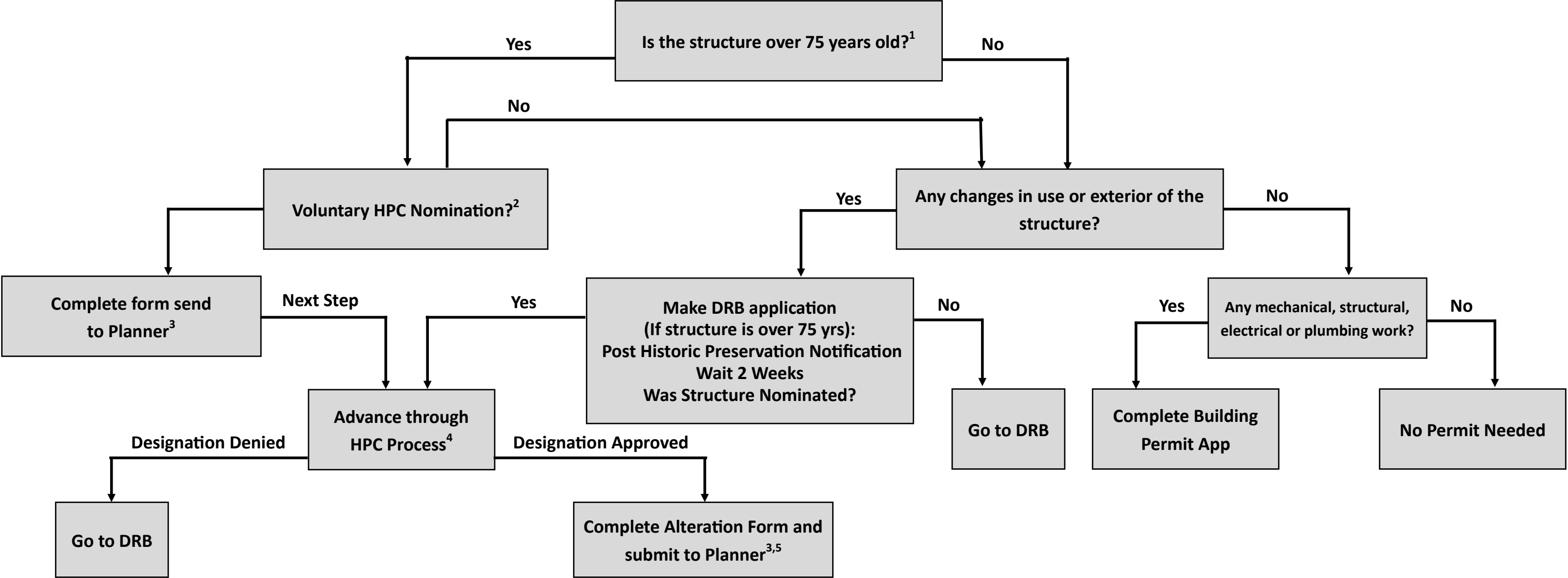


HISTORIC PRESERVATION PROCESS FLOW CHART



NOTES

¹According to Eagle County Assessor Site located at: <https://property.eaglecounty.us/assessor/taxweb/search.jsp>

²Must meet eligibility criteria defined in MMC Section: 19-3-20

³Send to Planner at: planner1@minturn.org or deliver to town hall, 302 Pine St 2nd floor

⁴Reference MMC Chapter 19; Article 4

⁵Reference MMC Chapter 19; Article 5